

abbotFox



Braithwait Close, Norwich
Guide Price £200,000

“

We are a team of genuine individuals who hold a deep passion for both property and marketing. Collectively, we bring over 70 years of experience in the property market of Norfolk and Suffolk. Our affection for both counties runs deep, and we are enthusiastic about sharing our passion with you.

Colin McKenzie | **Branch Partner**







THE DETAIL _____

abbotFox presents this three bedroom end-terraced home, quietly positioned within a popular residential location. Extended to offer generous living space, this home has been designed with modern family life in mind.

The accommodation comprises a welcoming entrance hall, spacious lounge, an extended open-plan living and dining area, modern kitchen, three well-proportioned bedrooms and a family bathroom.

Outside, the property enjoys a private enclosed garden, while an en-bloc garage provides additional practicality. Well placed for easy access to local amenities, schools and transport links, this home is sure to appeal to a wide range of buyers.

Offered to the market with no onward chain, an internal viewing comes highly recommended.

Guide price £200,000 - £220,000





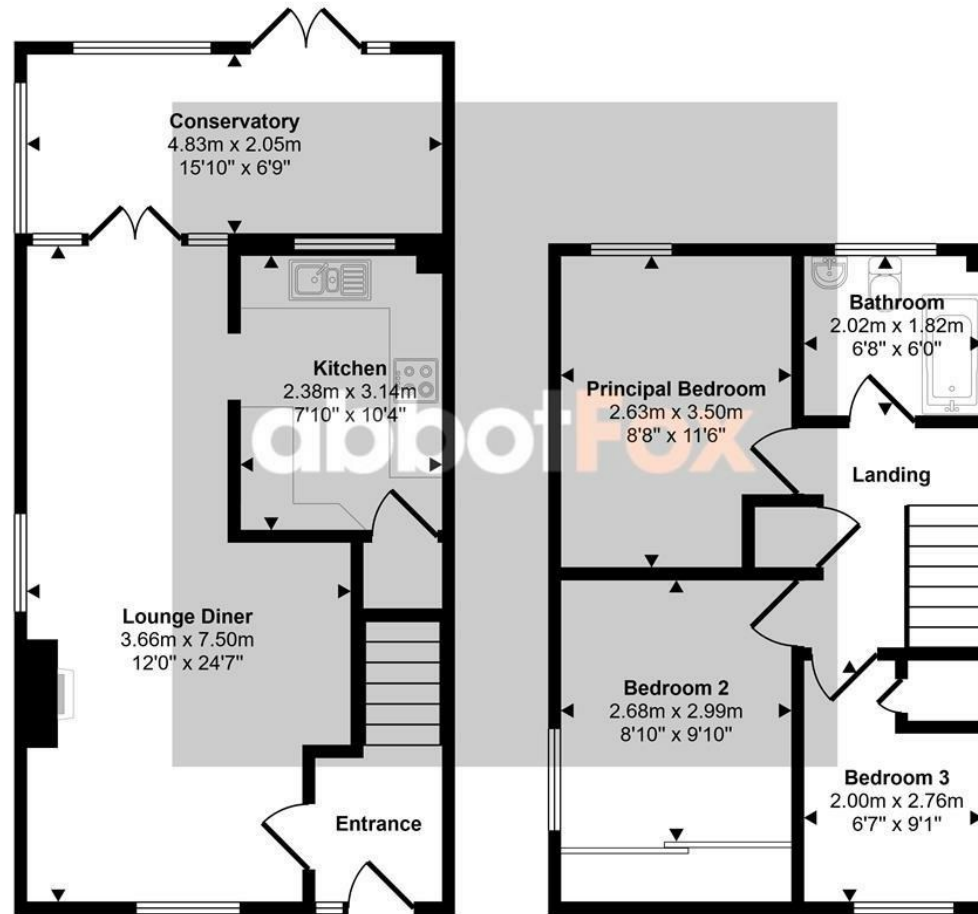
Wash Your Hands



THE HIGHLIGHTS _____

- Extended end terraced house
- Three bedrooms
- Generous living accommodation
- No onward chain
- Close to local amenities
- Ideal first time buy
- Viewing advised
- Guide price £200,000 - £220,000

Approx Gross Internal Area
82 sq m / 881 sq ft



Ground Floor
Approx 47 sq m / 501 sq ft

First Floor
Approx 35 sq m / 380 sq ft

This floorplan is only for illustrative purposes and is not to scale. Measurements of rooms, doors, windows, and any items are approximate and no responsibility is taken for any error, omission or mis-statement. Icons of items such as bathroom suites are representations only and may not look like the real items. Made with Made Snappy 360.

Let's talk

01603 660000

sales@abbotfox.co.uk

@abbotfox

EPC RATING - C

Disclaimer – In accordance with the Property Misdescriptions Act, the company abbotFox gives notice that all descriptions, references to condition, necessary permissions for use and other details are given in good faith and believed to be correct, but any purchaser should not rely on them as statements of fact, and must satisfy themselves by inspection or other means, as to their accuracy.